

70/500MP

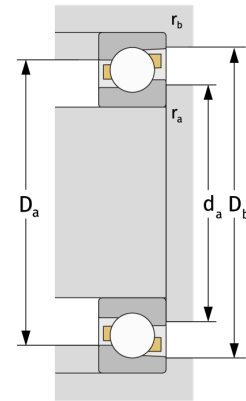
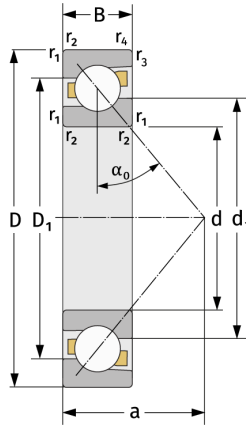
Angular Contact Ball Bearings (single row, metric)



Details:

Main dimensions

d [mm]	500	D_1 [mm]	≈ 640.2
D [mm]	720	$r_{1,2}$ [mm]	6
B [mm]	100	$r_{3,4}$ [mm]	3
Weight [kg]	≈ 128	α_0 [°]	30
d_1 [mm]	≈ 586.2	a [mm]	≈ 226



Mating dimensions		Calculation data	
$d_{a, \min}$ [mm]	523	C [kN]	720
$D_{a, \max}$ [mm]	697	C_0 [kN]	1590
$D_{b, \max}$ [mm]	707.6	C_u [kN]	31.6
$r_{a, \max}$ [mm]	5	n_{th} [min ⁻¹]	752
$r_{b, \max}$ [mm]	2.5	n_g [min ⁻¹]	940