

# 7052MP

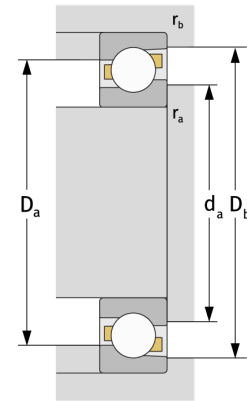
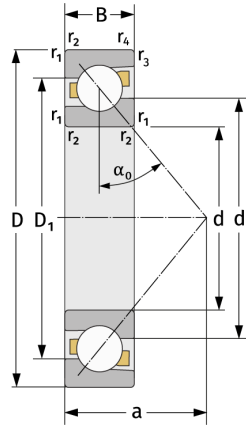
Angular Contact Ball Bearings (single row, metric)



## Details:

### Main dimensions

d [mm]	260	$D_1$ [mm]	$\approx 349.4$
D [mm]	400	$r_{1,2}$ [mm]	4
B [mm]	65	$r_{3,4}$ [mm]	1.5
Weight [kg]	$\approx 28.6$	$\alpha_0$ [°]	30
$d_1$ [mm]	$\approx 314.7$	a [mm]	$\approx 128$



Mating dimensions		Calculation data	
$d_{a, \min}$ [mm]	274.6	C [kN]	370
$D_{a, \max}$ [mm]	385.4	$C_0$ [kN]	565
$D_{b, \max}$ [mm]	393	$C_u$ [kN]	15.5
$r_{a, \max}$ [mm]	3	$n_{th}$ [min <sup>-1</sup> ]	1643
$r_{b, \max}$ [mm]	1.5	$n_g$ [min <sup>-1</sup> ]	2000