

708/500MP

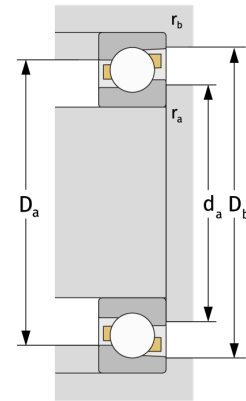
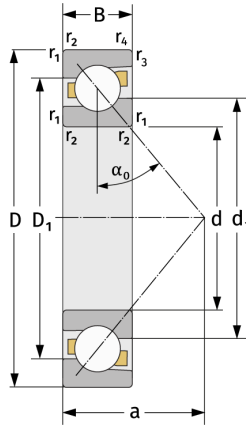
Angular Contact Ball Bearings (single row, metric)



Details:

Main dimensions

d [mm]	500	D_1 [mm]	≈ 576.2
D [mm]	620	$r_{1,2}$ [mm]	2.1
B [mm]	37	$r_{3,4}$ [mm]	1.1
Weight [kg]	≈ 25.5	α_0 [°]	30
d_1 [mm]	≈ 546.1	a [mm]	≈ 180



Mating dimensions		Calculation data	
$d_{a, \min}$ [mm]	510.2	C [kN]	272
$D_{a, \max}$ [mm]	609.8	C_0 [kN]	550
$D_{b, \max}$ [mm]	614	C_u [kN]	11.5
$r_{a, \max}$ [mm]	2.1	n_{th} [min ⁻¹]	697
$r_{b, \max}$ [mm]	1	n_g [min ⁻¹]	1100