

70876MP

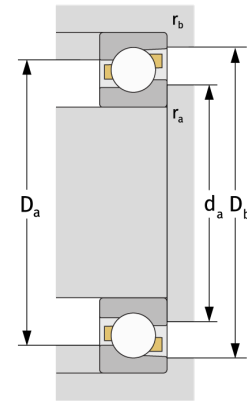
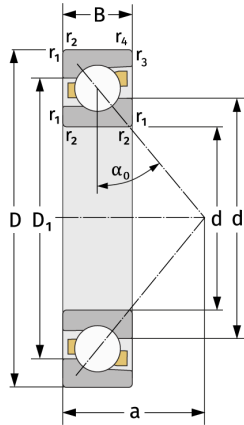
Angular Contact Ball Bearings (single row, metric)



Details:

Main dimensions

d [mm]	380	D_1 [mm]	≈ 443.4
D [mm]	480	$r_{1,2}$ [mm]	2
B [mm]	31	$r_{3,4}$ [mm]	1
Weight [kg]	≈ 13.7	α_0 [°]	30
d_1 [mm]	≈ 418.6	a [mm]	≈ 140



Mating dimensions		Calculation data	
$d_{a, \min}$ [mm]	388.8	C [kN]	194
$D_{a, \max}$ [mm]	471.2	C_0 [kN]	354
$D_{b, \max}$ [mm]	475.4	C_u [kN]	8.48
$r_{a, \max}$ [mm]	2	n_{th} [min ⁻¹]	962
$r_{b, \max}$ [mm]	1	n_g [min ⁻¹]	1500