

# 70960MP

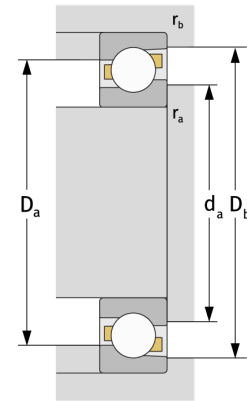
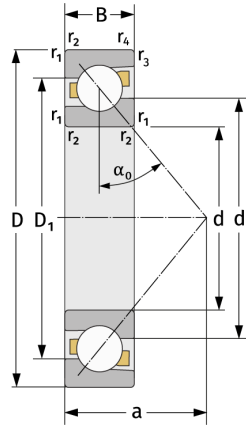
Angular Contact Ball Bearings (single row, metric)



## Details:

### Main dimensions

d [mm]	300	$D_1$ [mm]	$\approx 376.2$
D [mm]	420	$r_{1,2}$ [mm]	2.1
B [mm]	37	$r_{3,4}$ [mm]	1
Weight [kg]	$\approx 16.4$	$\alpha_0$ [°]	30
$d_1$ [mm]	$\approx 346.1$	a [mm]	$\approx 122$



### Mating dimensions

$d_{a, \min}$  [mm]

310.2

$D_{a, \max}$  [mm]

409.8

$D_{b, \max}$  [mm]

415.4

$r_{a, \max}$  [mm]

2.1

$r_{b, \max}$  [mm]

1

### Calculation data

C [kN]

236

$C_0$  [kN]

374

$C_u$  [kN]

9.83

$n_{th}$  [min<sup>-1</sup>]

1273

$n_g$  [min<sup>-1</sup>]

1800