

# 70976MP

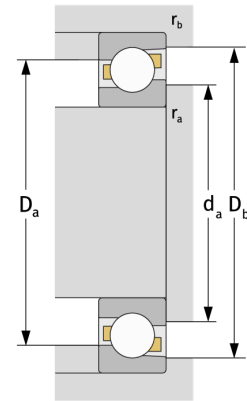
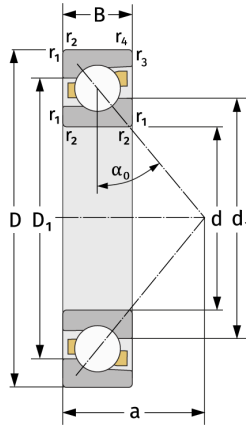
Angular Contact Ball Bearings (single row, metric)



## Details:

### Main dimensions

d [mm]	380	$D_1$ [mm]	≈ 470
D [mm]	520	$r_{1,2}$ [mm]	3
B [mm]	44	$r_{3,4}$ [mm]	1.1
Weight [kg]	≈ 28.4	$\alpha_0$ [°]	30
$d_1$ [mm]	≈ 432.9	a [mm]	≈ 152



Mating dimensions		Calculation data	
$d_{a, \min}$ [mm]	392.4	C [kN]	316
$D_{a, \max}$ [mm]	507.6	$C_0$ [kN]	570
$D_{b, \max}$ [mm]	514	$C_u$ [kN]	13.3
$r_{a, \max}$ [mm]	2.5	$n_{th}$ [min <sup>-1</sup> ]	965
$r_{b, \max}$ [mm]	1	$n_g$ [min <sup>-1</sup> ]	1400