

71856MP

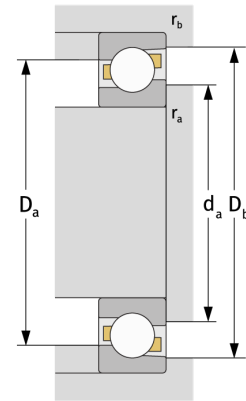
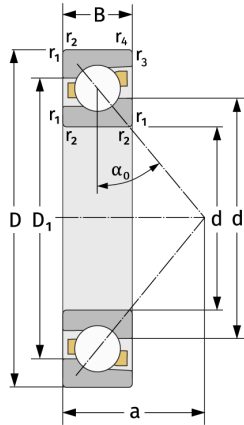
Angular Contact Ball Bearings (single row, metric)



Details:

Main dimensions

d [mm]	280	D_1 [mm]	≈ 328.4
D [mm]	350	$r_{1,2}$ [mm]	2
B [mm]	33	$r_{3,4}$ [mm]	1
Weight [kg]	≈ 6.67	α_0 [°]	30
d_1 [mm]	≈ 303.6	a [mm]	≈ 107



Mating dimensions		Calculation data	
$d_{a, \min}$ [mm]	288.8	C [kN]	171
$D_{a, \max}$ [mm]	341.2	C_0 [kN]	259
$D_{b, \max}$ [mm]	345.4	C_u [kN]	7.31
$r_{a, \max}$ [mm]	2	n_{th} [min ⁻¹]	1526
$r_{b, \max}$ [mm]	1	n_g [min ⁻¹]	2100