

# 71860MP

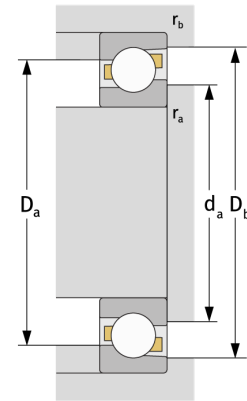
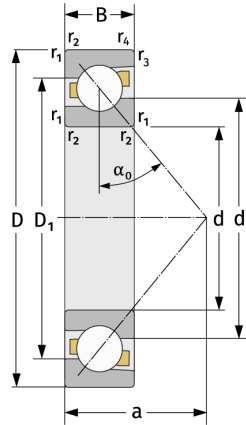
Angular Contact Ball Bearings (single row, metric)



## Details:

### Main dimensions

d [mm]	300	$D_1$ [mm]	$\approx 355.3$
D [mm]	380	$r_{1,2}$ [mm]	2.1
B [mm]	38	$r_{3,4}$ [mm]	1.1
Weight [kg]	$\approx 9.46$	$\alpha_0$ [°]	30
$d_1$ [mm]	$\approx 327$	a [mm]	$\approx 117$



Mating dimensions		Calculation data	
$d_{a, \min}$ [mm]	310.2	C [kN]	213
$D_{a, \max}$ [mm]	369.8	$C_0$ [kN]	322
$D_{b, \max}$ [mm]	374	$C_u$ [kN]	8.73
$r_{a, \max}$ [mm]	2.1	$n_{th}$ [min <sup>-1</sup> ]	1422
$r_{b, \max}$ [mm]	1	$n_g$ [min <sup>-1</sup> ]	1900