

# 71880MP

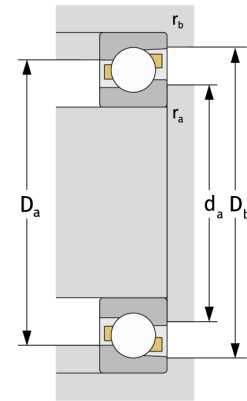
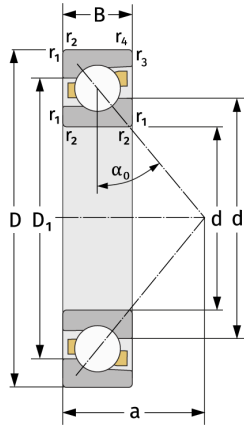
Angular Contact Ball Bearings (single row, metric)



## Details:

### Main dimensions

d [mm]	400	$D_1$ [mm]	$\approx 468.1$
D [mm]	500	$r_{1,2}$ [mm]	2.1
B [mm]	46	$r_{3,4}$ [mm]	1.1
Weight [kg]	$\approx 19.2$	$\alpha_0$ [°]	30
$d_1$ [mm]	$\approx 434.5$	a [mm]	$\approx 153$



Mating dimensions		Calculation data	
$d_{a, \min}$ [mm]	410.2	C [kN]	286
$D_{a, \max}$ [mm]	489.8	$C_0$ [kN]	515
$D_{b, \max}$ [mm]	494	$C_u$ [kN]	12
$r_{a, \max}$ [mm]	2.1	$n_{th}$ [min <sup>-1</sup> ]	1009
$r_{b, \max}$ [mm]	1	$n_g$ [min <sup>-1</sup> ]	1400