

71968MP

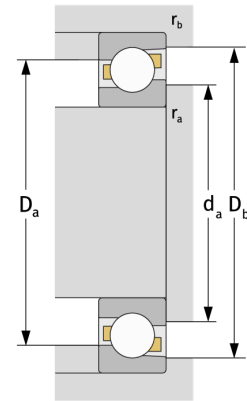
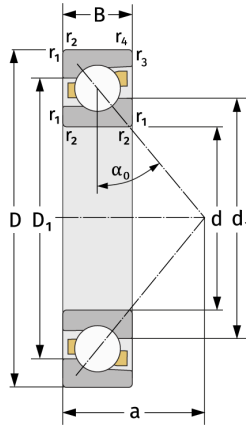
Angular Contact Ball Bearings (single row, metric)



Details:

Main dimensions

d [mm]	340	D_1 [mm]	≈ 422.9
D [mm]	460	$r_{1,2}$ [mm]	3
B [mm]	56	$r_{3,4}$ [mm]	1.1
Weight [kg]	≈ 24.7	α_0 [°]	30
d_1 [mm]	≈ 380.4	a [mm]	≈ 143



Mating dimensions		Calculation data	
$d_{a, \min}$ [mm]	352.4	C [kN]	340
$D_{a, \max}$ [mm]	447.6	C_0 [kN]	580
$D_{b, \max}$ [mm]	454	C_u [kN]	14.3
$r_{a, \max}$ [mm]	2.5	n_{th} [min ⁻¹]	1229
$r_{b, \max}$ [mm]	1	n_g [min ⁻¹]	1600