

71976MP

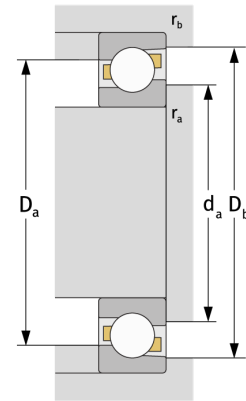
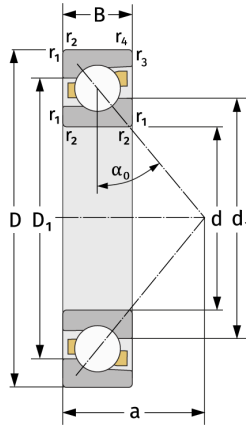
Angular Contact Ball Bearings (single row, metric)



Details:

Main dimensions

d [mm]	380	D_1 [mm]	≈ 476.7
D [mm]	520	$r_{1,2}$ [mm]	4
B [mm]	65	$r_{3,4}$ [mm]	1.5
Weight [kg]	≈ 37.7	α_0 [°]	30
d_1 [mm]	≈ 427.2	a [mm]	≈ 162



Mating dimensions		Calculation data	
$d_{a, \min}$ [mm]	394.6	C [kN]	416
$D_{a, \max}$ [mm]	505.4	C_0 [kN]	760
$D_{b, \max}$ [mm]	513	C_u [kN]	17.8
$r_{a, \max}$ [mm]	3	n_{th} [min ⁻¹]	1072
$r_{b, \max}$ [mm]	1.5	n_g [min ⁻¹]	1400