

71980MP

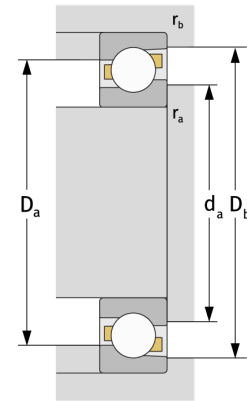
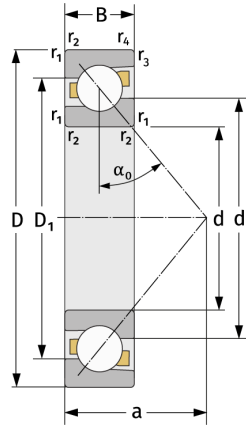
Angular Contact Ball Bearings (single row, metric)



Details:

Main dimensions

d [mm]	400	D_1 [mm]	≈ 496.7
D [mm]	540	$r_{1,2}$ [mm]	4
B [mm]	65	$r_{3,4}$ [mm]	1.5
Weight [kg]	≈ 39.5	α_0 [°]	30
d_1 [mm]	≈ 447.2	a [mm]	≈ 168



Mating dimensions		Calculation data	
$d_{a, \min}$ [mm]	414.6	C [kN]	431
$D_{a, \max}$ [mm]	525.4	C_0 [kN]	815
$D_{b, \max}$ [mm]	533	C_u [kN]	18.6
$r_{a, \max}$ [mm]	3	n_{th} [min ⁻¹]	1002
$r_{b, \max}$ [mm]	1.5	n_g [min ⁻¹]	1300