

7396B.MP

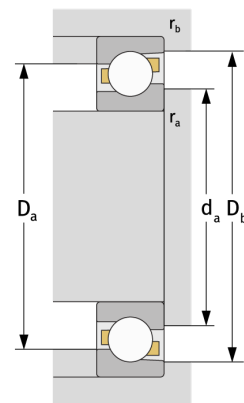
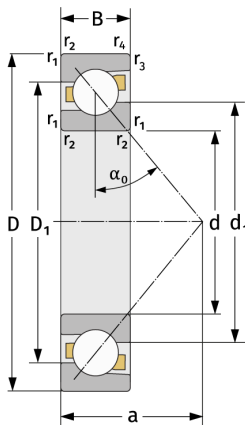
Angular Contact Ball Bearings (single row, metric)



Details:

Main dimensions

d [mm]	480	D_1 [mm]	≈ 791.1
D [mm]	980	$r_{1,2}$ [mm]	9.5
B [mm]	160	$r_{3,4}$ [mm]	5
Weight [kg]	≈ 607	α_0 [°]	40
d_1 [mm]	≈ 681.8	a [mm]	≈ 386



Mating dimensions		Calculation data	
$d_{a, \min}$ [mm]	520	C [kN]	1380
$D_{a, \max}$ [mm]	940	C_0 [kN]	3220
$D_{b, \max}$ [mm]	960	C_u [kN]	58.3
$r_{a, \max}$ [mm]	8	n_{th} [min^{-1}]	520
$r_{b, \max}$ [mm]	4	n_g [min^{-1}]	750