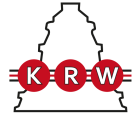


H214

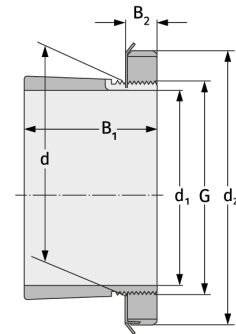
Clamping Sleeves



Details:

Main dimensions

d [mm]	70	B ₁ [mm]	41
Weight [kg]	≈ 0.593	B ₂ [mm]	14
d ₁ [mm]	60	G [mm]	M70x2
d ₂ [mm]	92		



Mating dimensions

Containing components

Groove / shaft nut	KM14
Securing	MB14