

H2311

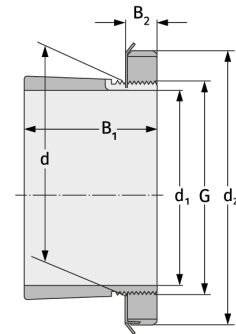
Clamping Sleeves



Details:

Main dimensions

d [mm]	55	B ₁ [mm]	59
Weight [kg]	≈ 0.42	B ₂ [mm]	12
d ₁ [mm]	50	G [mm]	M55x2
d ₂ [mm]	75		



Mating dimensions

Containing components

Groove / shaft nut	KM11
Securing	MB11