

H2324

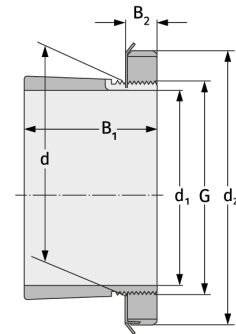
Clamping Sleeves



Details:

Main dimensions

d [mm]	120	B ₁ [mm]	112
Weight [kg]	≈ 3.19	B ₂ [mm]	22
d ₁ [mm]	110	G [mm]	M120x
d ₂ [mm]	155		2



Mating dimensions

Containing components

Groove / shaft nut	KM24
Securing	MB24