

H2328

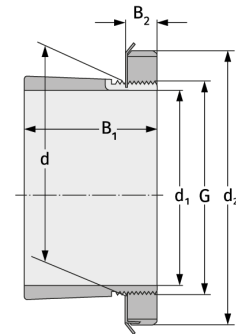
Clamping Sleeves



Details:

Main dimensions

d [mm]	140	B ₁ [mm]	131
Weight [kg]	≈ 5.55	B ₂ [mm]	24
d ₁ [mm]	125	G [mm]	M140x
d ₂ [mm]	180		2



Mating dimensions

Containing components

Groove / shaft nut	KM28
Securing	MB28