

H2356X

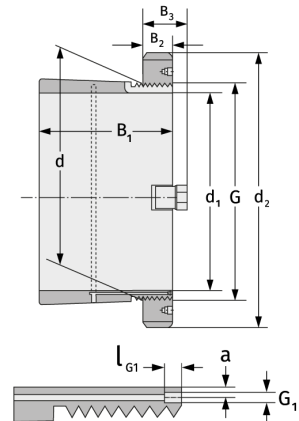
Clamping Sleeves



Details:

Main dimensions

d [mm]	280	B ₂ [mm]	41
Weight [kg]	≈ 27.8	G [mm]	Tr280x
d ₁ [mm]	260		4
d ₂ [mm]	350	G ₁ [mm]	M6
B ₁ [mm]	224	l _{G1} [mm]	7
		a [mm]	4.2



Mating dimensions

Containing components

Groove / shaft nut

HM56T

Securing

MB56