

# H240/850

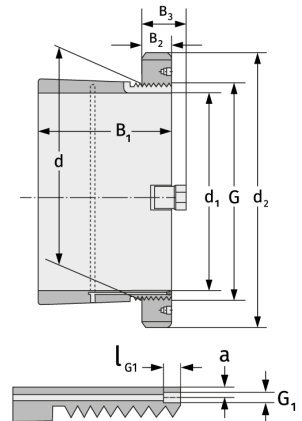
Clamping Sleeves



## Details:

### Main dimensions

d [mm]	850	B <sub>3</sub> [mm]	115
Weight [kg]	≈ 393	G [mm]	Tr850x
d <sub>1</sub> [mm]	800		7
d <sub>2</sub> [mm]	980	G <sub>1</sub> [mm]	G1/8
B <sub>1</sub> [mm]	495	l <sub>G1</sub> [mm]	12
B <sub>2</sub> [mm]	90	a [mm]	10



### Mating dimensions

### Containing components

Groove / shaft nut	HM30/850
Securing	MS30/850