

H24038

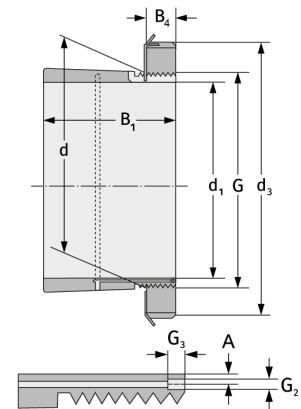
Clamping Sleeves



Details:

Main dimensions

d [mm]	190	B ₂ [mm]	31
Weight [kg]	≈ 9	G [mm]	M190x
d ₁ [mm]	170		3
d ₂ [mm]	220	G ₁ [mm]	M6
B ₁ [mm]	143	l _{G1} [mm]	7
		a [mm]	4.2



Mating dimensions

Containing components

Groove / shaft nut

KML38

Securing

MBL38