

# H24044

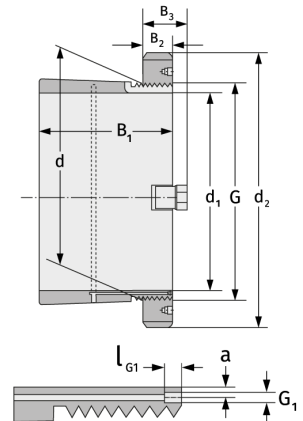
Clamping Sleeves



## Details:

### Main dimensions

d [mm]	220	B <sub>3</sub> [mm]	41
Weight [kg]	≈ 12.4	G [mm]	Tr220x
d <sub>1</sub> [mm]	200		4
d <sub>2</sub> [mm]	260	G <sub>1</sub> [mm]	M6
B <sub>1</sub> [mm]	162	l <sub>G1</sub> [mm]	7
B <sub>2</sub> [mm]	30	a [mm]	4.2



### Mating dimensions

### Containing components

Groove / shaft nut

HM3044

Securing

MS3044