

H24048

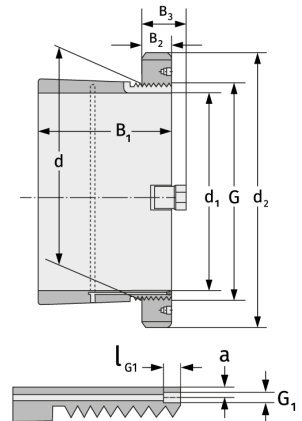
Clamping Sleeves



Details:

Main dimensions

d [mm]	240	B ₃ [mm]	46
Weight [kg]	≈ 15.3	G [mm]	Tr240x
d ₁ [mm]	220		4
d ₂ [mm]	290	G ₁ [mm]	M6
B ₁ [mm]	167	l _{G1} [mm]	7
B ₂ [mm]	34	a [mm]	4.2



Mating dimensions

Containing components

Groove / shaft nut

HM3048

Securing

MS3048