

H24052

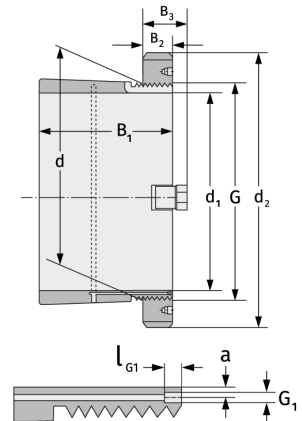
Clamping Sleeves



Details:

Main dimensions

d [mm]	260	B ₃ [mm]	46
Weight [kg]	≈ 18.4	G [mm]	Tr260x
d ₁ [mm]	240		4
d ₂ [mm]	310	G ₁ [mm]	M6
B ₁ [mm]	190	l _{G1} [mm]	7
B ₂ [mm]	34	a [mm]	4.2



Mating dimensions

Containing components

Groove / shaft nut

HM3052

Securing

MS3048