

# H24056

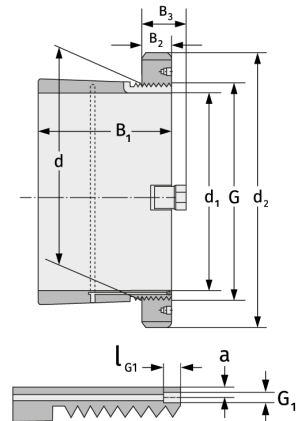
Clamping Sleeves



## Details:

### Main dimensions

d [mm]	280	B <sub>3</sub> [mm]	50
Weight [kg]	≈ 20.7	G [mm]	Tr280x
d <sub>1</sub> [mm]	260		4
d <sub>2</sub> [mm]	330	G <sub>1</sub> [mm]	M6
B <sub>1</sub> [mm]	195	l <sub>G1</sub> [mm]	7
B <sub>2</sub> [mm]	38	a [mm]	4.2



### Mating dimensions

### Containing components

Groove / shaft nut

HM3056

Securing

MS3056