

H24072

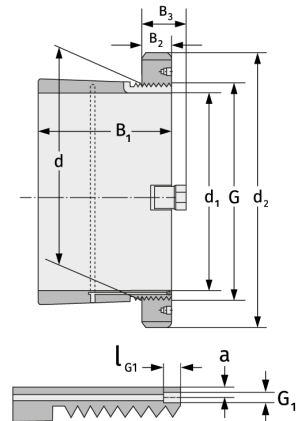
Clamping Sleeves



Details:

Main dimensions

d [mm]	360	B ₃ [mm]	58
Weight [kg]	≈ 35.6	G [mm]	Tr360x
d ₁ [mm]	340		5
d ₂ [mm]	420	G ₁ [mm]	M6
B ₁ [mm]	244	l _{G1} [mm]	7
B ₂ [mm]	45	a [mm]	3.5



Mating dimensions

Containing components

Groove / shaft nut

HM3072

Securing

MS3072