

H241/600

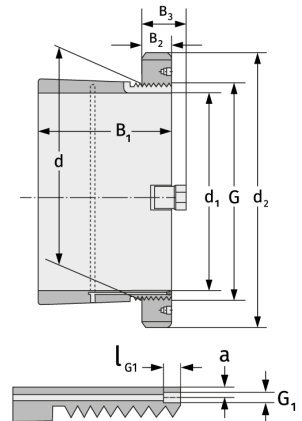
Clamping Sleeves



Details:

Main dimensions

d [mm]	600	B ₃ [mm]	110
Weight [kg]	≈ 249	G [mm]	Tr600x
d ₁ [mm]	560		6
d ₂ [mm]	750	G ₁ [mm]	G1/8
B ₁ [mm]	490	l _{G1} [mm]	12
B ₂ [mm]	85	a [mm]	8



Mating dimensions

Containing components

Groove / shaft nut

HM31/600

Securing

MS31/560