

H24168

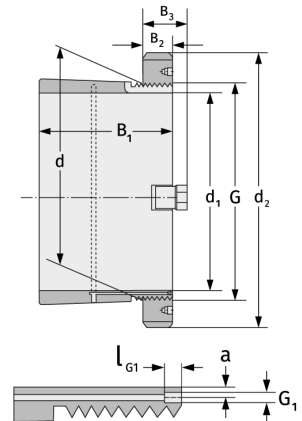
Clamping Sleeves



Details:

Main dimensions

d [mm]	340	B ₃ [mm]	72
Weight [kg]	≈ 53	G [mm]	Tr340x
d ₁ [mm]	320		5
d ₂ [mm]	440	G ₁ [mm]	M6
B ₁ [mm]	317	l _{G1} [mm]	7
B ₂ [mm]	55	a [mm]	3.5



Mating dimensions

Containing components

Groove / shaft nut

HM3168

Securing

MS3168