

H24180

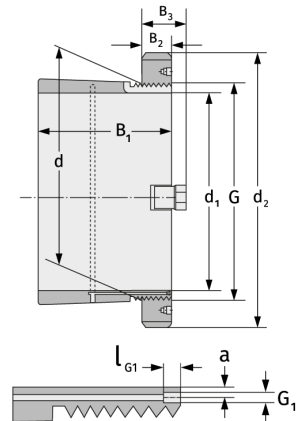
Clamping Sleeves



Details:

Main dimensions

d [mm]	400	B ₃ [mm]	82
Weight [kg]	≈ 73.8	G [mm]	Tr400x
d ₁ [mm]	380		5
d ₂ [mm]	520	G ₁ [mm]	M6
B ₁ [mm]	332	l _{G1} [mm]	7
B ₂ [mm]	62	a [mm]	3.5



Mating dimensions

Containing components

Groove / shaft nut

HM3180

Securing

MS3180