

H30/1000

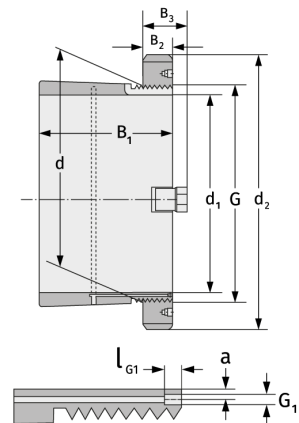
Clamping Sleeves



Details:

Main dimensions

d [mm]	1000	B ₃ [mm]	125
Weight [kg]	≈ 470	G [mm]	Tr1000
d ₁ [mm]	950		x8
d ₂ [mm]	1140	G ₁ [mm]	G1/8
B ₁ [mm]	430	l _{G1} [mm]	12
B ₂ [mm]	100	a [mm]	10



Mating dimensions	Containing components	
	Groove / shaft nut	HM30/100 0
	Securing	MS30/100 0