

H30/530

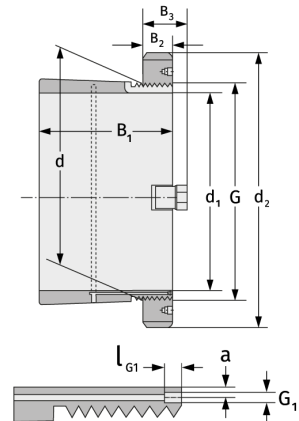
Clamping Sleeves



Details:

Main dimensions

d [mm]	530	B ₃ [mm]	90
Weight [kg]	≈ 100	G [mm]	Tr530x
d ₁ [mm]	500		6
d ₂ [mm]	630	G ₁ [mm]	M8
B ₁ [mm]	265	l _{G1} [mm]	12
B ₂ [mm]	68	a [mm]	6



Mating dimensions

Containing components

Groove / shaft nut

HM30/530

Securing

MS30/530