

H30/600

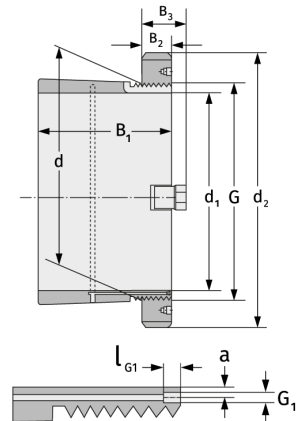
Clamping Sleeves



Details:

Main dimensions

d [mm]	600	B ₃ [mm]	97
Weight [kg]	≈ 146	G [mm]	Tr600x
d ₁ [mm]	560		6
d ₂ [mm]	700	G ₁ [mm]	G1/8
B ₁ [mm]	289	l _{G1} [mm]	12
B ₂ [mm]	75	a [mm]	8



Mating dimensions

Containing components

Groove / shaft nut

HM30/600

Securing

MS30/530