

# H30/710

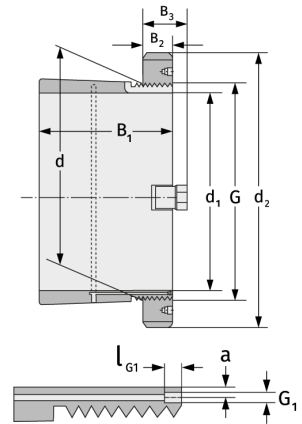
Clamping Sleeves



## Details:

### Main dimensions

d [mm]	710	B <sub>3</sub> [mm]	112
Weight [kg]	≈ 223	G [mm]	Tr710x
d <sub>1</sub> [mm]	670		7
d <sub>2</sub> [mm]	830	G <sub>1</sub> [mm]	G1/8
B <sub>1</sub> [mm]	342	l <sub>G1</sub> [mm]	12
B <sub>2</sub> [mm]	90	a [mm]	8



### Mating dimensions

### Containing components

Groove / shaft nut

HM30/710

Securing

MS30/710