

# H30/800

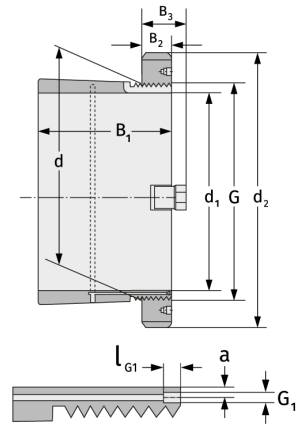
Clamping Sleeves



## Details:

### Main dimensions

d [mm]	800	B <sub>3</sub> [mm]	112
Weight [kg]	≈ 300	G [mm]	Tr800x
d <sub>1</sub> [mm]	750		7
d <sub>2</sub> [mm]	920	G <sub>1</sub> [mm]	G1/8
B <sub>1</sub> [mm]	366	l <sub>G1</sub> [mm]	12
B <sub>2</sub> [mm]	90	a [mm]	10



### Mating dimensions

### Containing components

Groove / shaft nut

HM30/800

Securing

MS30/750