

H3036

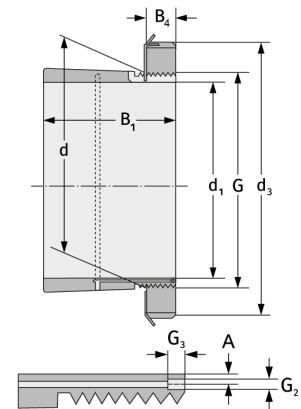
Clamping Sleeves



Details:

Main dimensions

d [mm]	180	B ₂ [mm]	30
Weight [kg]	≈ 6.83	G [mm]	M180x
d ₁ [mm]	160		3
d ₂ [mm]	210	G ₁ [mm]	M6
B ₁ [mm]	109	l _{G1} [mm]	7
		a [mm]	4.2



Mating dimensions

Containing components

Groove / shaft nut

KML36

Securing

MBL36