

H31/1000

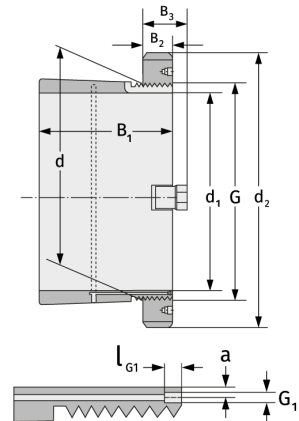
Clamping Sleeves



Details:

Main dimensions

d [mm]	1000	B ₃ [mm]	154
Weight [kg]	≈ 842	G [mm]	Tr1000
d ₁ [mm]	950		x8
d ₂ [mm]	1240	G ₁ [mm]	G1/8
B ₁ [mm]	609	l _{G1} [mm]	12
B ₂ [mm]	125	a [mm]	10



Mating dimensions

Containing components

Groove / shaft nut	HM31/100 0
Securing	MS31/100 0