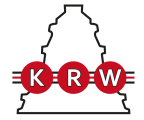


H31/1060

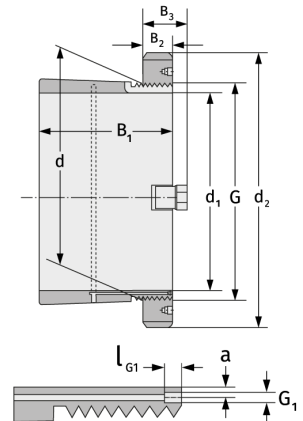
Clamping Sleeves



Details:

Main dimensions

d [mm]	1060	B ₃ [mm]	154
Weight [kg]	≈ 984	G [mm]	Tr1060
d ₁ [mm]	1000		x8
d ₂ [mm]	1300	G ₁ [mm]	G1/4
B ₁ [mm]	622	l _{G1} [mm]	15
B ₂ [mm]	125	a [mm]	12



Mating dimensions

Containing components

Groove / shaft nut	HM31/106
	0
Securing	MS31/100
	0