

# H31/1400

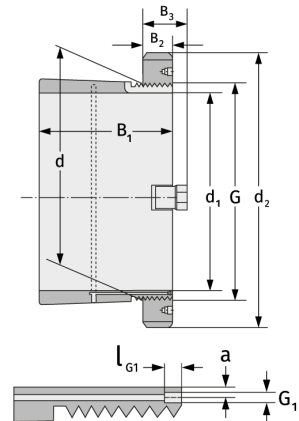
Clamping Sleeves



## Details:

### Main dimensions

d [mm]	1400	B <sub>3</sub> [mm]	159
Weight [kg]	≈ 1745	G [mm]	Tr1400
d <sub>1</sub> [mm]	1320		x8
d <sub>2</sub> [mm]	1640	G <sub>1</sub> [mm]	G1/4
B <sub>1</sub> [mm]	735	l <sub>G1</sub> [mm]	15
B <sub>2</sub> [mm]	130	a [mm]	15



### Mating dimensions

### Containing components

Groove / shaft nut	HM31/140
	0
Securing	MS31/100
	0