

H31/530

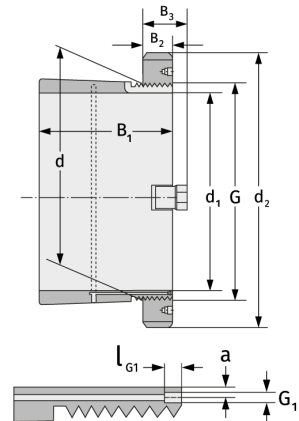
Clamping Sleeves



Details:

Main dimensions

d [mm]	530	B ₃ [mm]	105
Weight [kg]	≈ 161	G [mm]	Tr530x
d ₁ [mm]	500		6
d ₂ [mm]	670	G ₁ [mm]	M8
B ₁ [mm]	364	l _{G1} [mm]	12
B ₂ [mm]	80	a [mm]	6



Mating dimensions

Containing components

Groove / shaft nut	HM31/530
Securing	MS31/530