

# H31/600

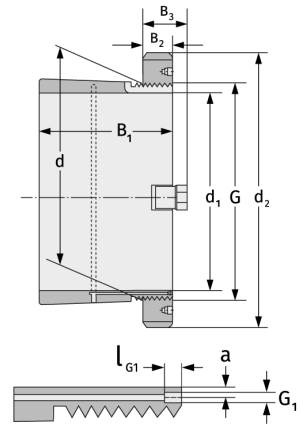
Clamping Sleeves



## Details:

### Main dimensions

d [mm]	600	B <sub>3</sub> [mm]	110
Weight [kg]	≈ 234	G [mm]	Tr600x
d <sub>1</sub> [mm]	560		6
d <sub>2</sub> [mm]	750	G <sub>1</sub> [mm]	G1/8
B <sub>1</sub> [mm]	399	l <sub>G1</sub> [mm]	12
B <sub>2</sub> [mm]	85	a [mm]	8



### Mating dimensions

### Containing components

Groove / shaft nut

HM31/600

Securing

MS31/560