

H31/750

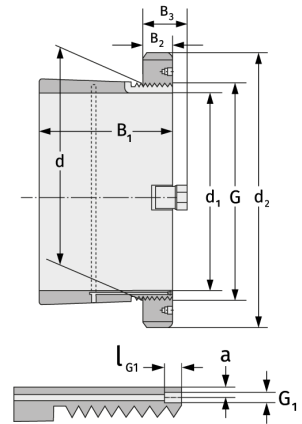
Clamping Sleeves



Details:

Main dimensions

d [mm]	750	B ₃ [mm]	141
Weight [kg]	≈ 452	G [mm]	Tr750x
d ₁ [mm]	710		7
d ₂ [mm]	950	G ₁ [mm]	G1/8
B ₁ [mm]	493	l _{G1} [mm]	12
B ₂ [mm]	112	a [mm]	8



Mating dimensions

Containing components

Groove / shaft nut

HM31/750

Securing

MS31/750