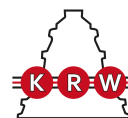


H3121

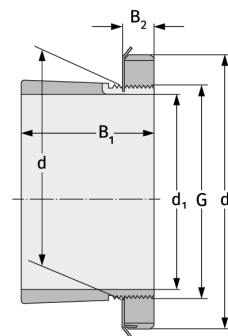
Clamping Sleeves



Details:

Main dimensions

d [mm]	105	B ₁ [mm]	80
d ₁ [mm]	95	B ₂ [mm]	20
d ₂ [mm]	140	G [mm]	M105x 2



Mating dimensions

Containing components

Groove / shaft nut	KM21
Securing	MB21