

H316

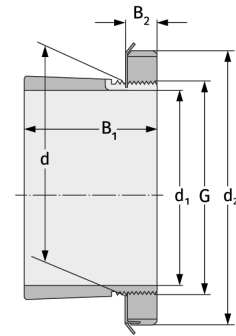
Clamping Sleeves



Details:

Main dimensions

d [mm]	80	B ₁ [mm]	59
Weight [kg]	≈ 1.03	B ₂ [mm]	17
d ₁ [mm]	70	G [mm]	M80x2
d ₂ [mm]	105		



Mating dimensions

Containing components

Groove / shaft nut	KM16
Securing	MB16