

H3184

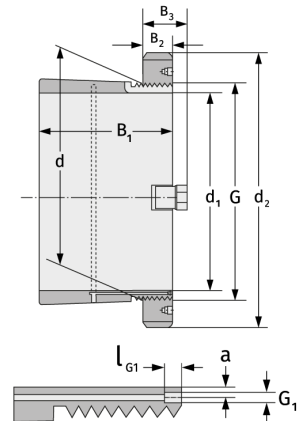
Clamping Sleeves



Details:

Main dimensions

d [mm]	420	B ₃ [mm]	90
Weight [kg]	≈ 84.2	G [mm]	Tr420x
d ₁ [mm]	400		5
d ₂ [mm]	540	G ₁ [mm]	M6
B ₁ [mm]	304	l _{G1} [mm]	7
B ₂ [mm]	70	a [mm]	3.5



Mating dimensions

Containing components

Groove / shaft nut

HM3184

Securing

MS3180