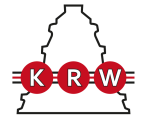


H3196

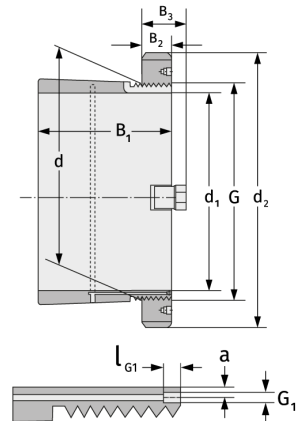
Clamping Sleeves



Details:

Main dimensions

d [mm]	480	B ₃ [mm]	95
Weight [kg]	≈ 133	G [mm]	Tr480x
d ₁ [mm]	450		5
d ₂ [mm]	620	G ₁ [mm]	M8
B ₁ [mm]	335	l _{G1} [mm]	12
B ₂ [mm]	75	a [mm]	6.5



Mating dimensions

Containing components

Groove / shaft nut

HM3196

Securing

MS3196