

# H32/670

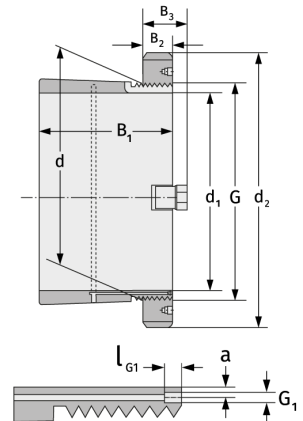
Clamping Sleeves



## Details:

### Main dimensions

d [mm]	670	B <sub>3</sub> [mm]	131
Weight [kg]	≈ 404	G [mm]	Tr670x
d <sub>1</sub> [mm]	630		6
d <sub>2</sub> [mm]	850	G <sub>1</sub> [mm]	G1/8
B <sub>1</sub> [mm]	558	l <sub>G1</sub> [mm]	12
B <sub>2</sub> [mm]	106	a [mm]	8



### Mating dimensions

### Containing components

Groove / shaft nut

HM31/670

Securing

MS31/670