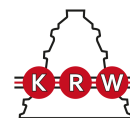


# H32/750

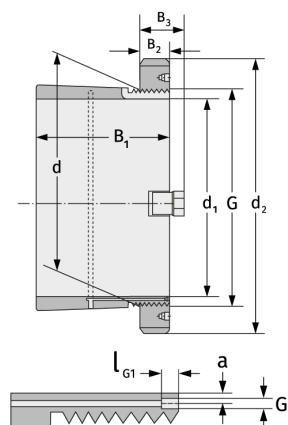
Clamping Sleeves



## Details:

### Main dimensions

d [mm]	750	B <sub>3</sub> [mm]	141
Weight [kg]	≈ 507	G [mm]	Tr750x
d <sub>1</sub> [mm]	710		7
d <sub>2</sub> [mm]	950	G <sub>1</sub> [mm]	G1/8
B <sub>1</sub> [mm]	603	l <sub>G1</sub> [mm]	12
B <sub>2</sub> [mm]	112	a [mm]	8



### Mating dimensions

### Containing components

Groove / shaft nut	HM31/750
Securing	MS31/750