

H32/800

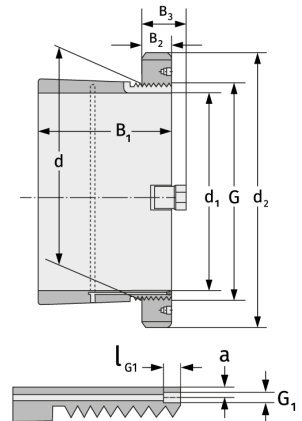
Clamping Sleeves



Details:

Main dimensions

d [mm]	800	B ₃ [mm]	141
Weight [kg]	≈ 610	G [mm]	Tr800x
d ₁ [mm]	750		7
d ₂ [mm]	1000	G ₁ [mm]	G1/8
B ₁ [mm]	618	l _{G1} [mm]	12
B ₂ [mm]	112	a [mm]	10



Mating dimensions

Containing components

Groove / shaft nut

HM31/800

Securing

MS31/750