

# H3264

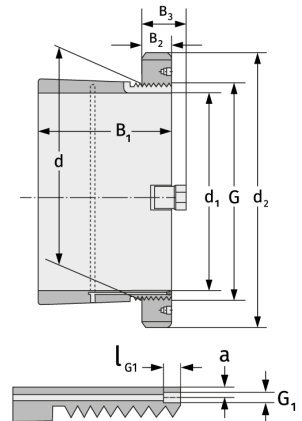
Clamping Sleeves



## Details:

### Main dimensions

d [mm]	320	B <sub>3</sub> [mm]	56
Weight [kg]	≈ 39.3	G [mm]	Tr320x
d <sub>1</sub> [mm]	300		5
d <sub>2</sub> [mm]	400	G <sub>1</sub> [mm]	M6
B <sub>1</sub> [mm]	258	l <sub>G1</sub> [mm]	7
B <sub>2</sub> [mm]	42	a [mm]	3.5



### Mating dimensions

### Containing components

Groove / shaft nut

HM3165

Securing

MS3164