

H3276

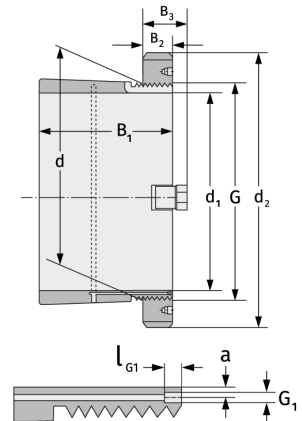
Clamping Sleeves



Details:

Main dimensions

d [mm]	380	B ₃ [mm]	77
Weight [kg]	≈ 69.6	G [mm]	Tr380x
d ₁ [mm]	360		5
d ₂ [mm]	490	G ₁ [mm]	M6
B ₁ [mm]	310	l _{G1} [mm]	7
B ₂ [mm]	60	a [mm]	3.5



Mating dimensions

Containing components

Groove / shaft nut

HM3176

Securing

MS3168