

H3288

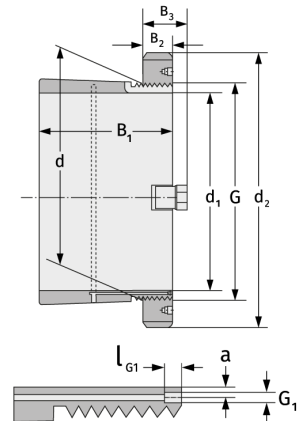
Clamping Sleeves



Details:

Main dimensions

d [mm]	440	B ₃ [mm]	90
Weight [kg]	≈ 118	G [mm]	Tr440x
d ₁ [mm]	410		5
d ₂ [mm]	560	G ₁ [mm]	M8
B ₁ [mm]	361	l _{G1} [mm]	12
B ₂ [mm]	70	a [mm]	6.5



Mating dimensions

Containing components

Groove / shaft nut

HM3188

Securing

MS3188